

# District of Saanich

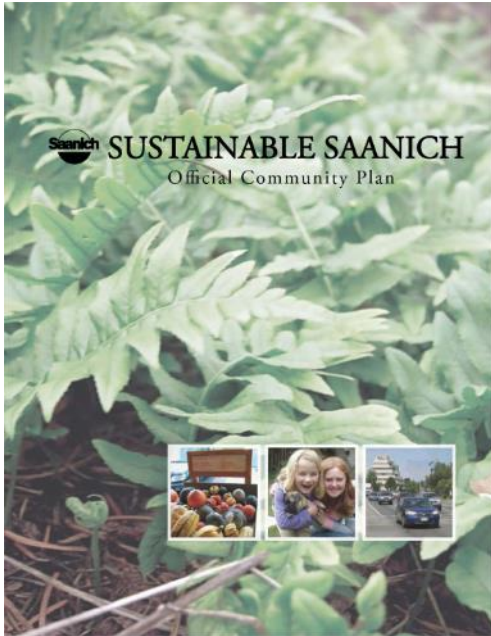
Official Community Plan Overview  
March 7, 2018





# Saanich Official Community Plan

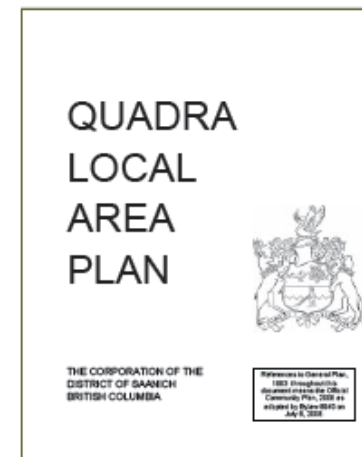
# Saanich Official Community Plan (OCP)



- Provides a vision for the municipality
- Guides future growth and change
- Expression of fundamental values and goals of the community
  
- All plans, policies, bylaws must be consistent with OCP

# Local Area Plans

- Appendices to the OCP
- Comprehensive set of topics
- Implement the broad directions in more detail at the local level
- Plans were last updated between 1997 and 2007





New areas of  
Focus in the  
OCP

# **New and Updated Content in 2008 OCP**

- Plan Structure
- Climate Change
- Range of Mobility Options
- Housing Affordability
- Centres and Villages

# Climate Change

- Evolving data related to climate change impacts and sea level rise
- Saanich has committed to be 100% renewable by 2050
- Climate Adaptation and Climate mitigation plans are being updated



# Mobility Options

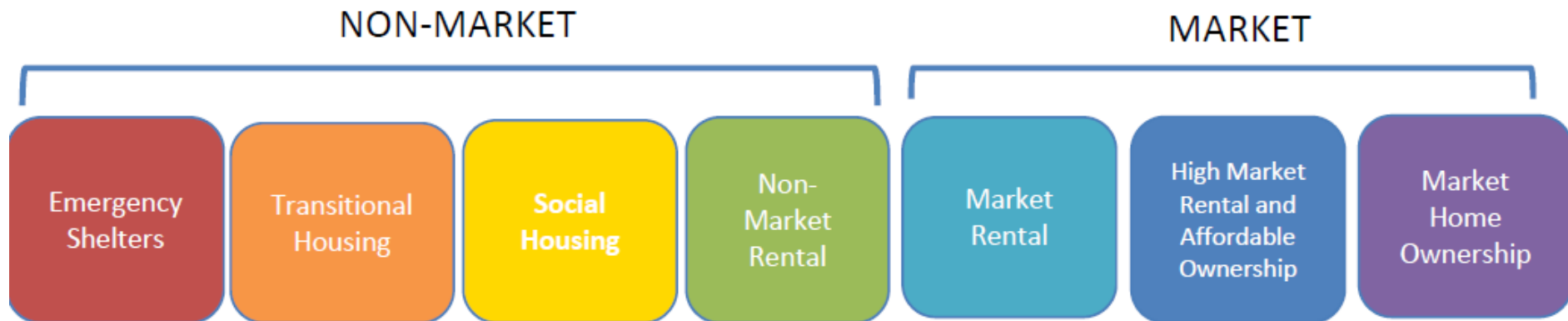
- Provide a choice of alternative, convenient and attractive travel modes
- Link to health and environmental benefits
- Active Transportation Plan being finalized
- Numerous complete street projects being implemented
- Transit priority projects





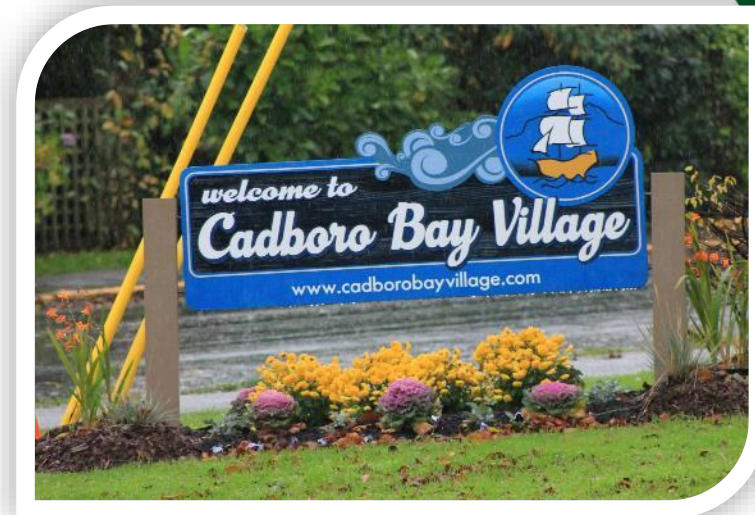
# Housing Affordability

- Multiple needs / multiple solutions
- Variety of housing options throughout the community
- Regional Housing Affordability Strategy & Trust Fund
- Exploration of infill



# Centres and Villages

- Identified and emphasized in the OCP
- Largely existing commercial centres
- Areas where additional population and employment density are intended to be focused





## CENTRES AND VILLAGES

### MAJOR CENTRE

- 1 Uptown
- 2 Hillside Centre
- 3 University Centre
- 4 Royal Oak Centre
- 5 Tillicum - Burnside Centre

### NEIGHBOURHOOD CENTRE

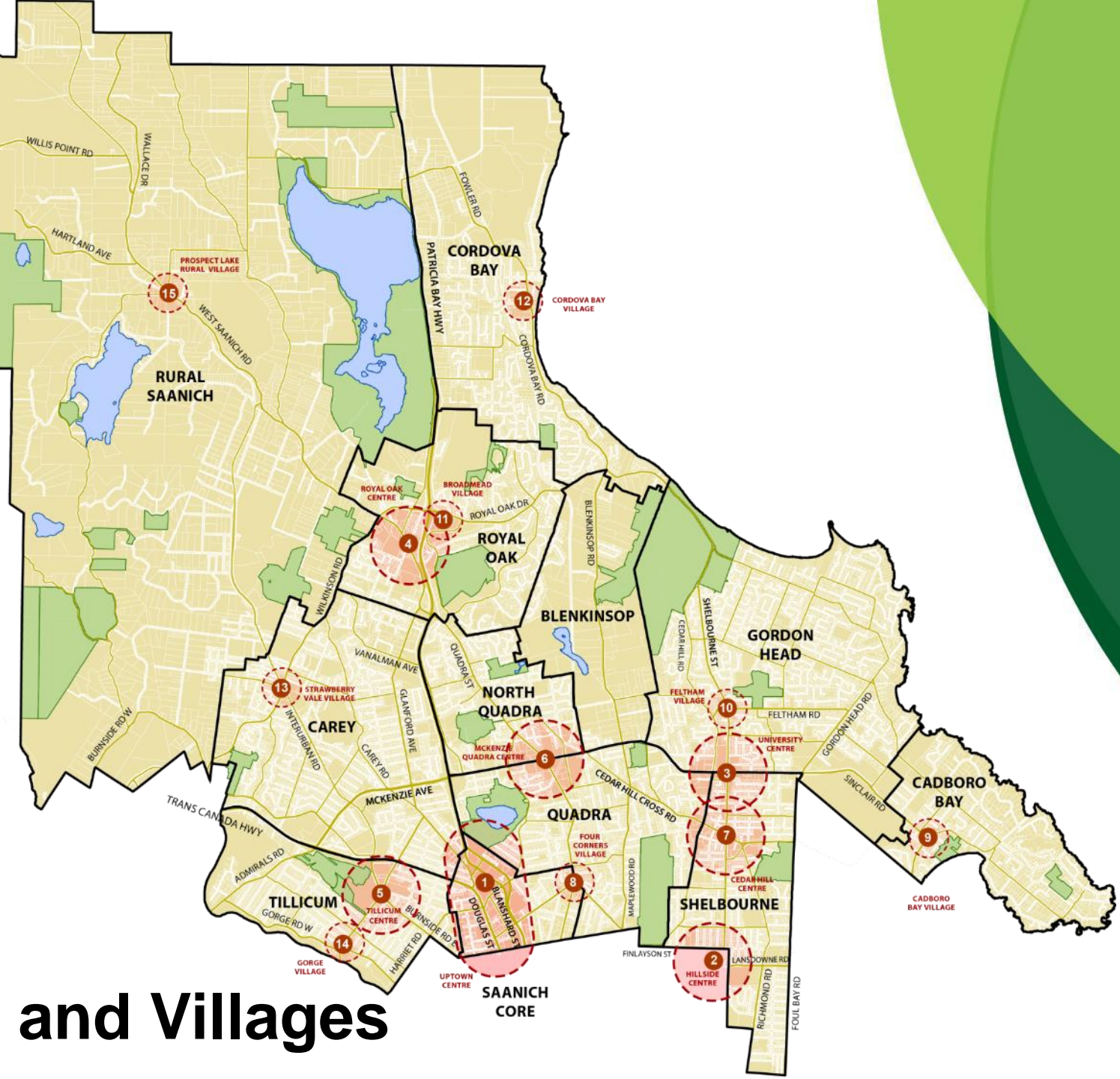
- 6 McKenzie - Quadra Centre
- 7 Shelbourne Neighbourhood Centre (Cedar Hill Centre)

### VILLAGE

- 8 Four Corners Village
- 9 Cadboro Bay Village
- 10 Feltham Village
- 11 Broadmead Village
- 12 Cordova Bay Village
- 13 Strawberry Vale Village
- 14 Gorge Village

### RURAL VILLAGE

- 15 Prospect Lake Rural Village

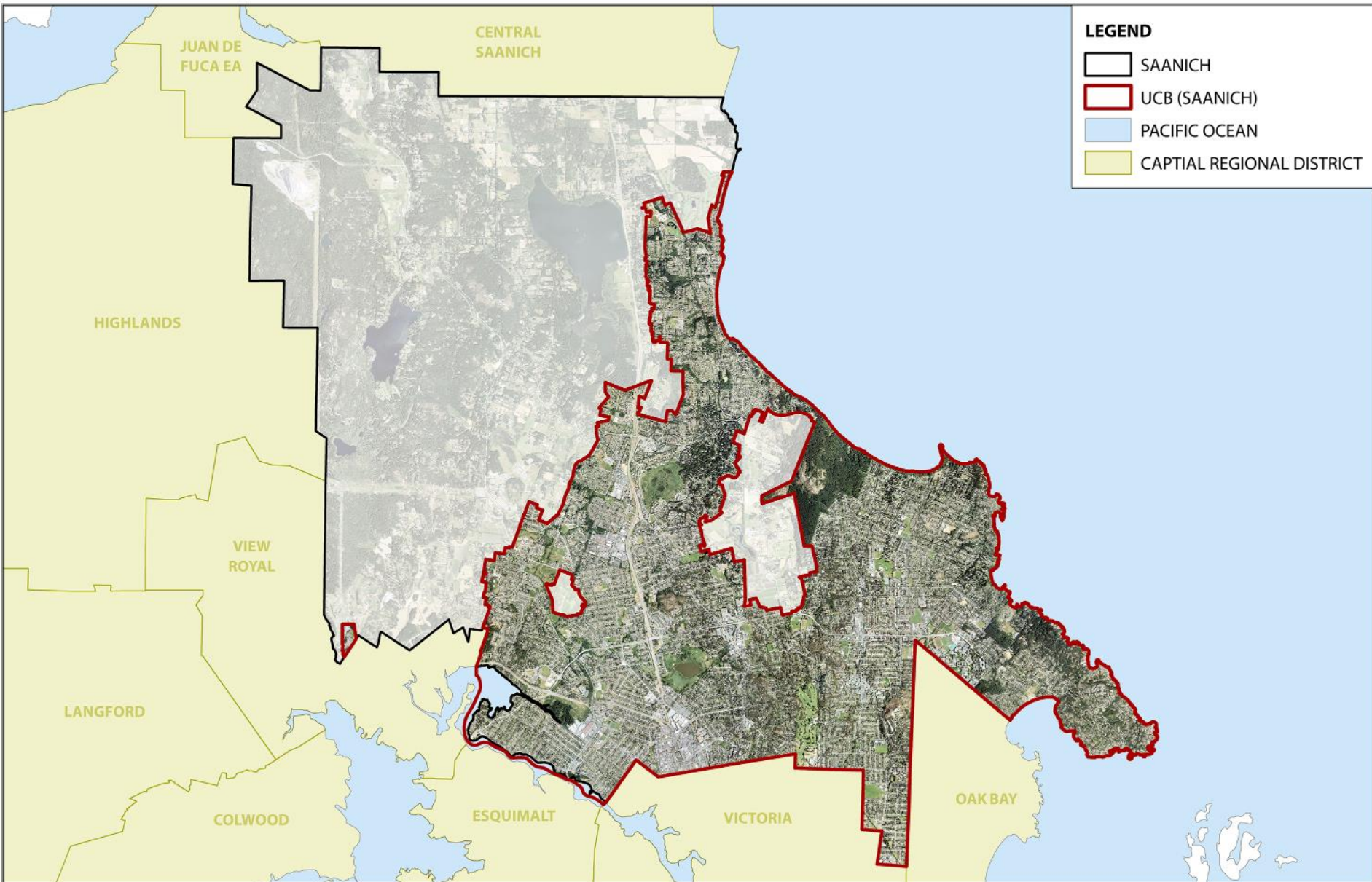


# Centres and Villages

# Rationale for Focused Growth in Centres and Villages



- Increase the viability of walking, cycling and transit
- Reduce development pressure on rural and farm land
- More cost-effective infrastructure servicing
- Enables more energy efficient building forms
- Provide opportunities to improve the public realm in key areas

# Urban Containment

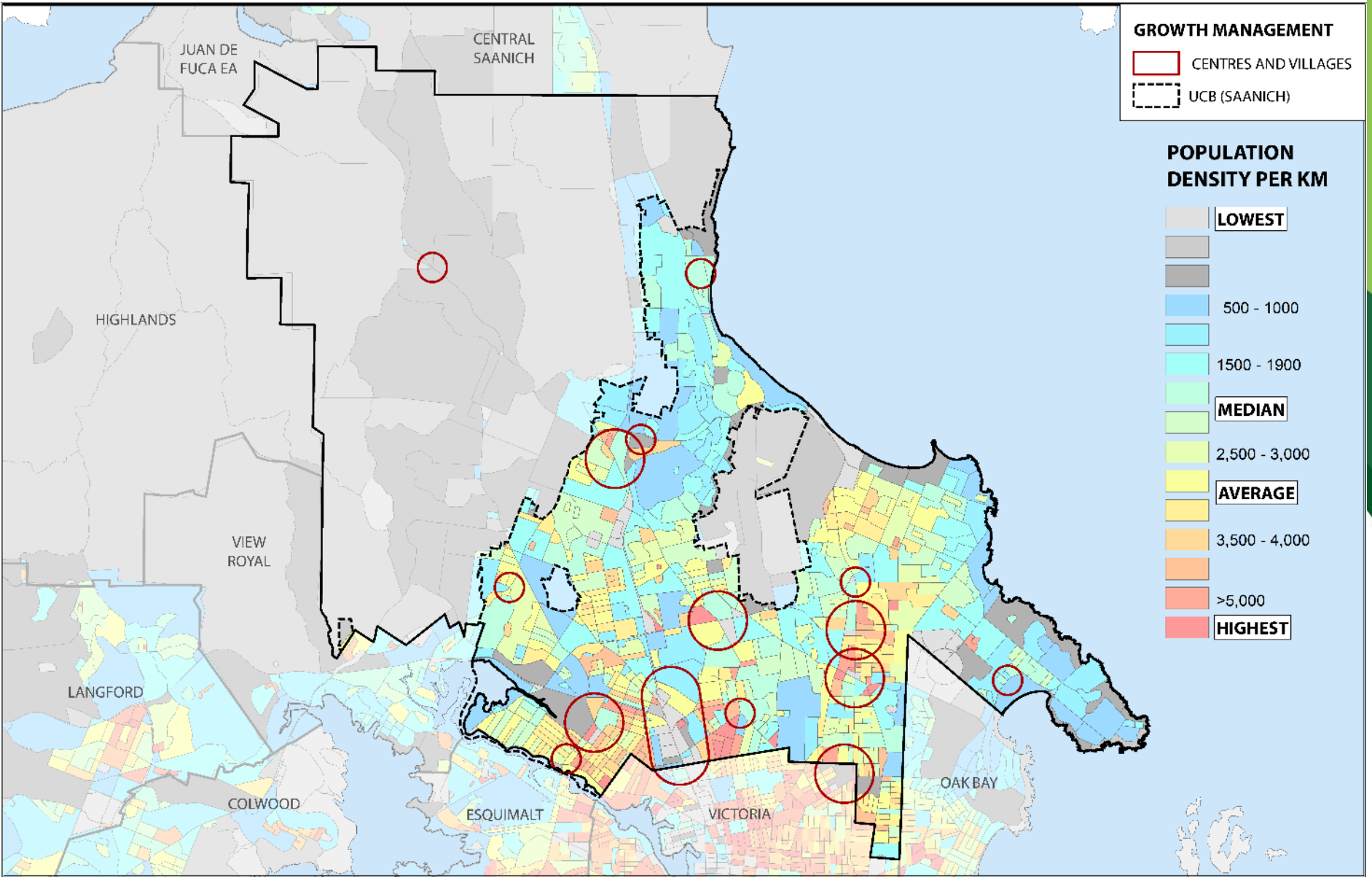
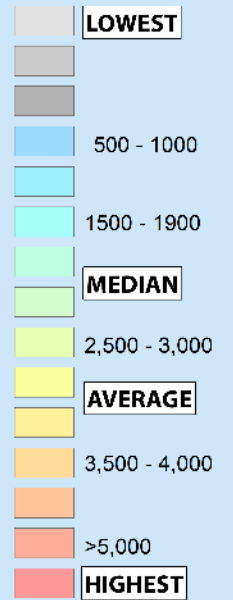


# Existing Population Density

**GROWTH MANAGEMENT**

-  CENTRES AND VILLAGES
-  UCB (SAANICH)

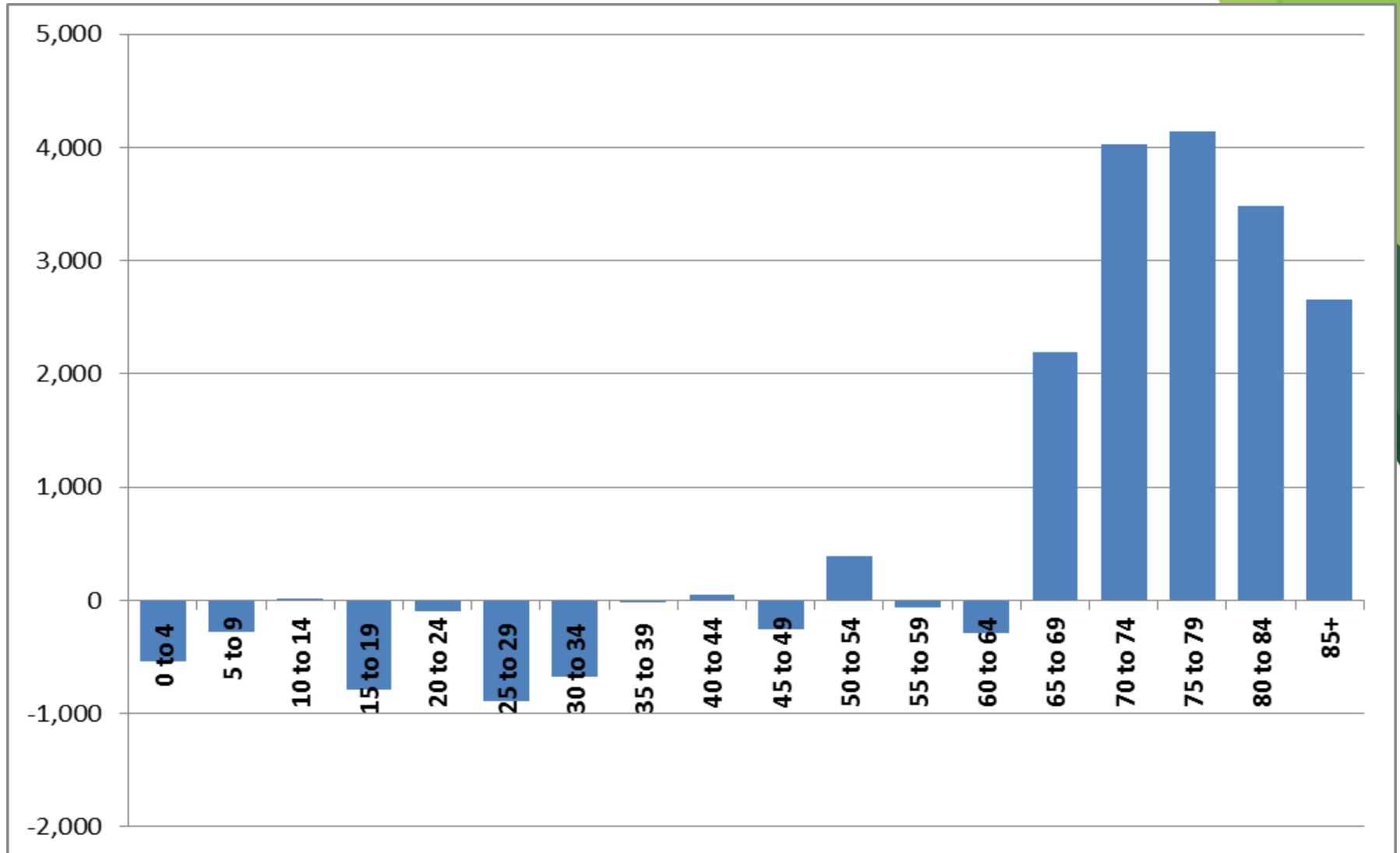
**POPULATION DENSITY PER KM**





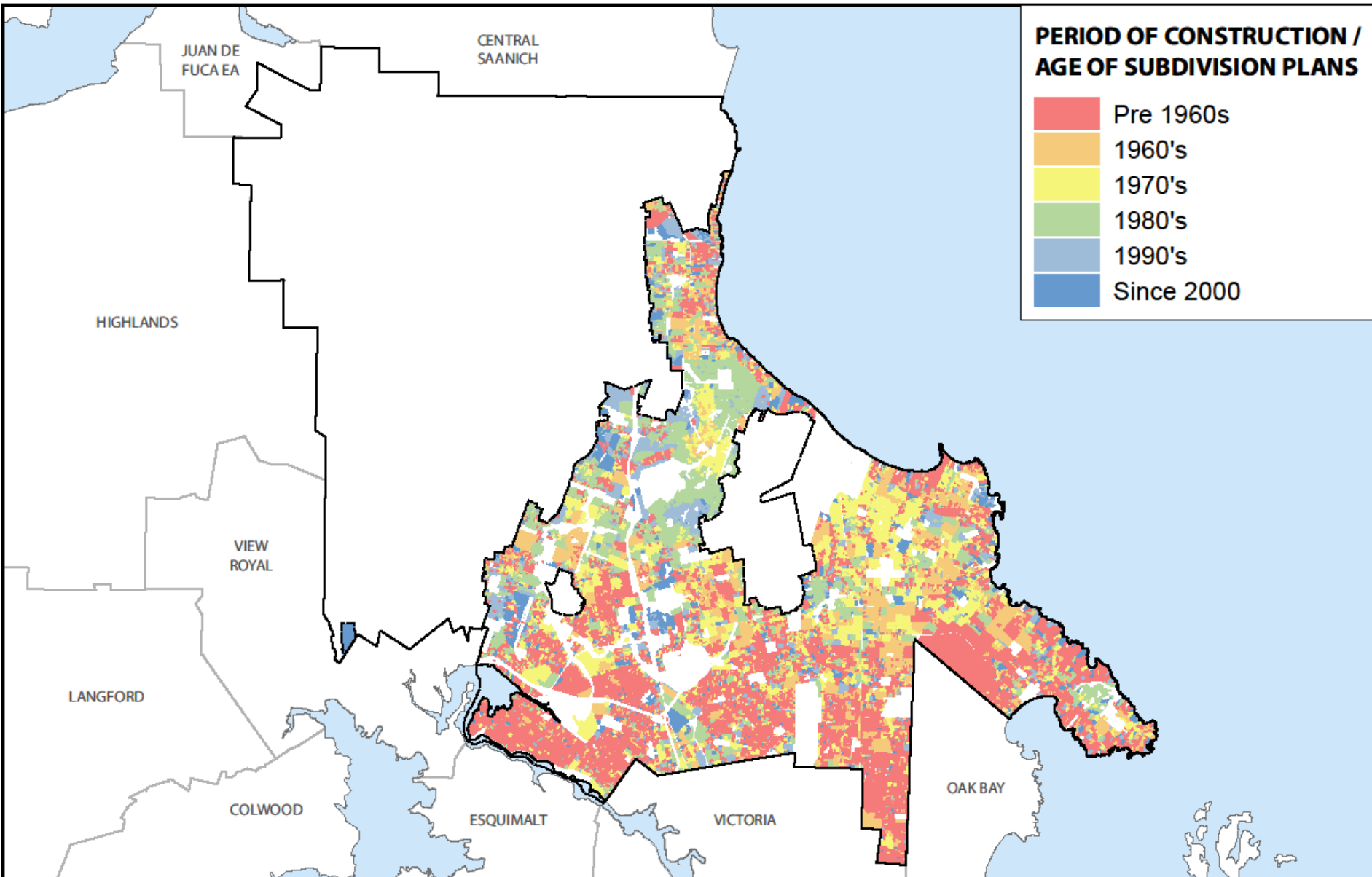
**Considerations...**

# Projected Population Age Change – 2011 - 2036





# Phases of Community Development

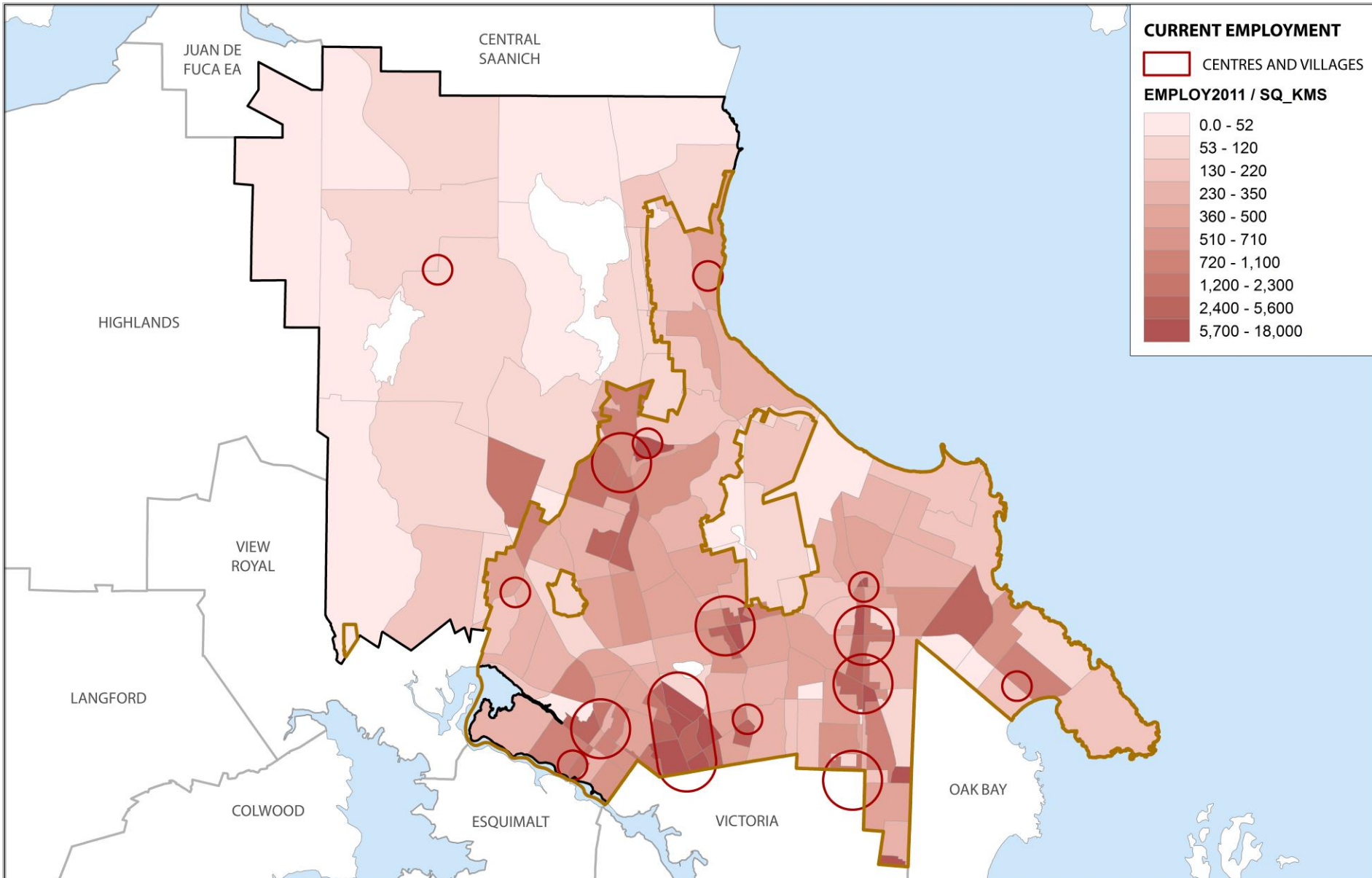
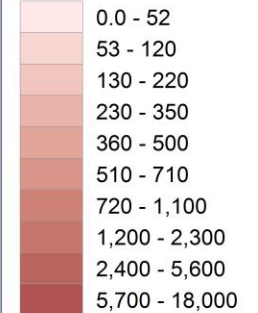


# Existing Employment Density

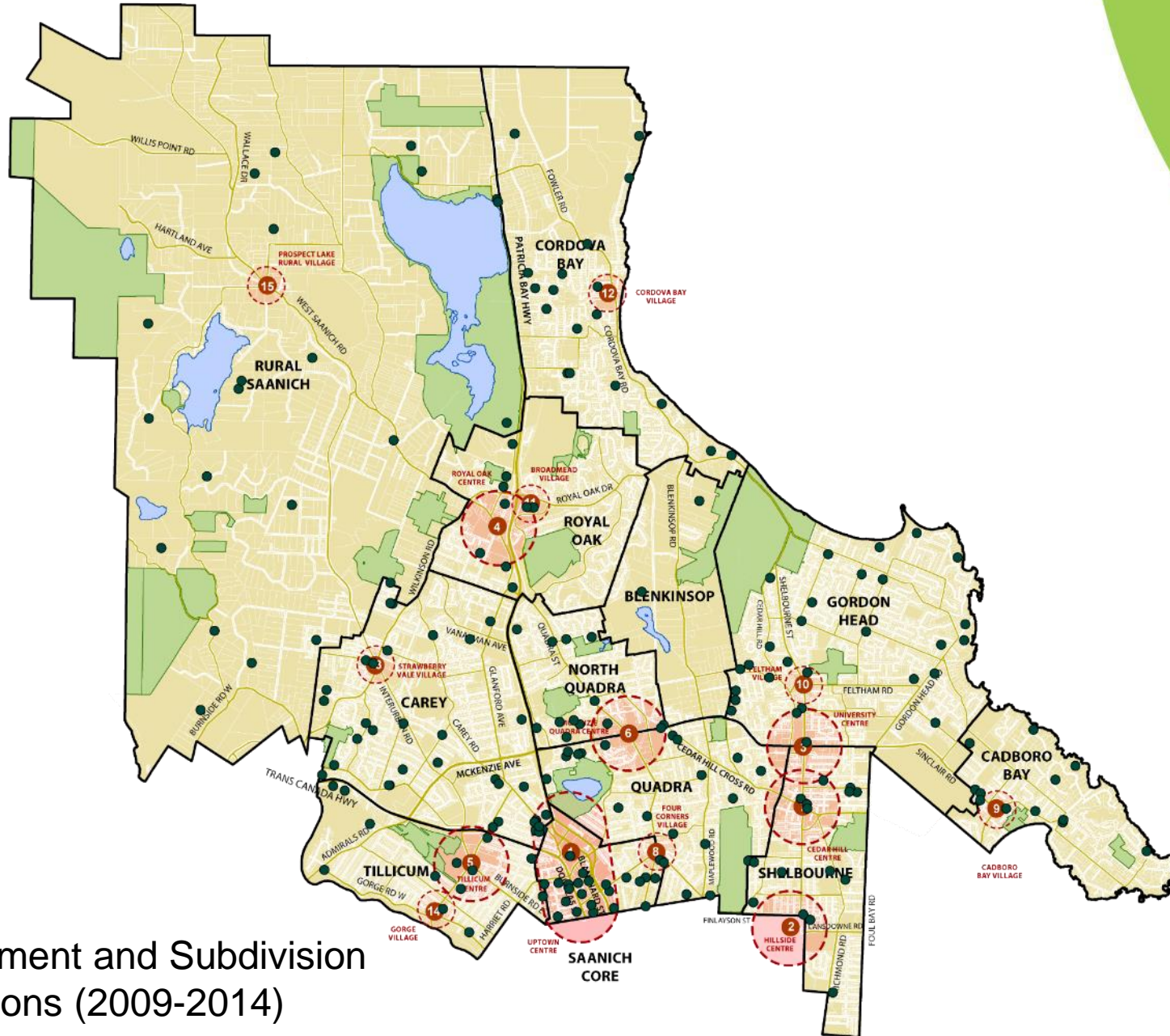
## CURRENT EMPLOYMENT

 CENTRES AND VILLAGES

## EMPLOY2011 / SQ\_KMS



# Recent Development Activity



Development and Subdivision  
Applications (2009-2014)

# Topography

